

# MONTHLY MEMBERSHIP PROGRESS REPORT

LOCATION AUSTRALIA

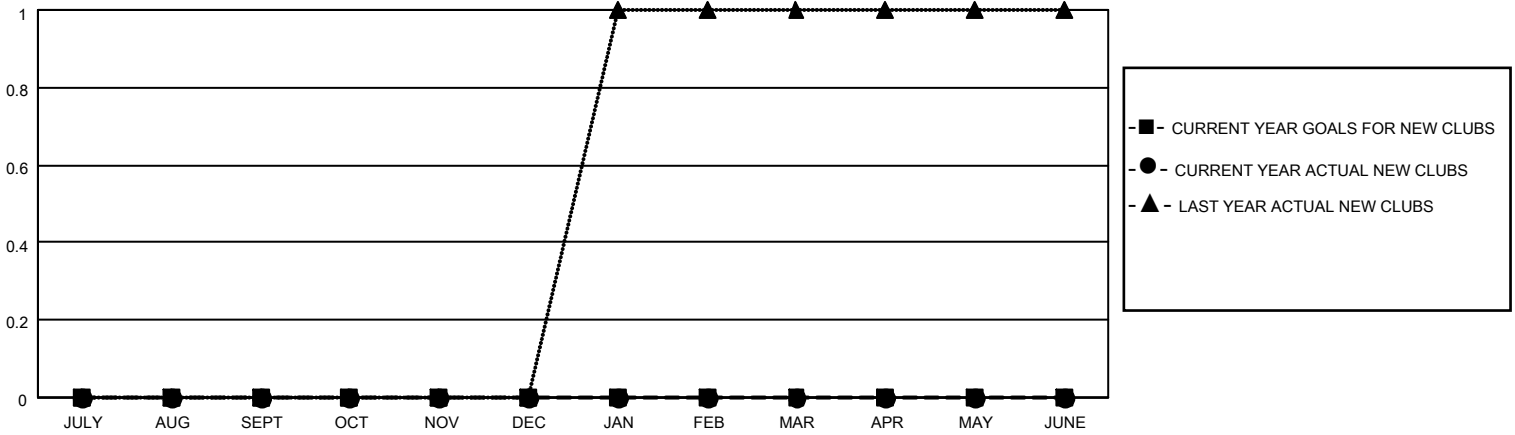
District 201V5

Results as of: 3/31/2023

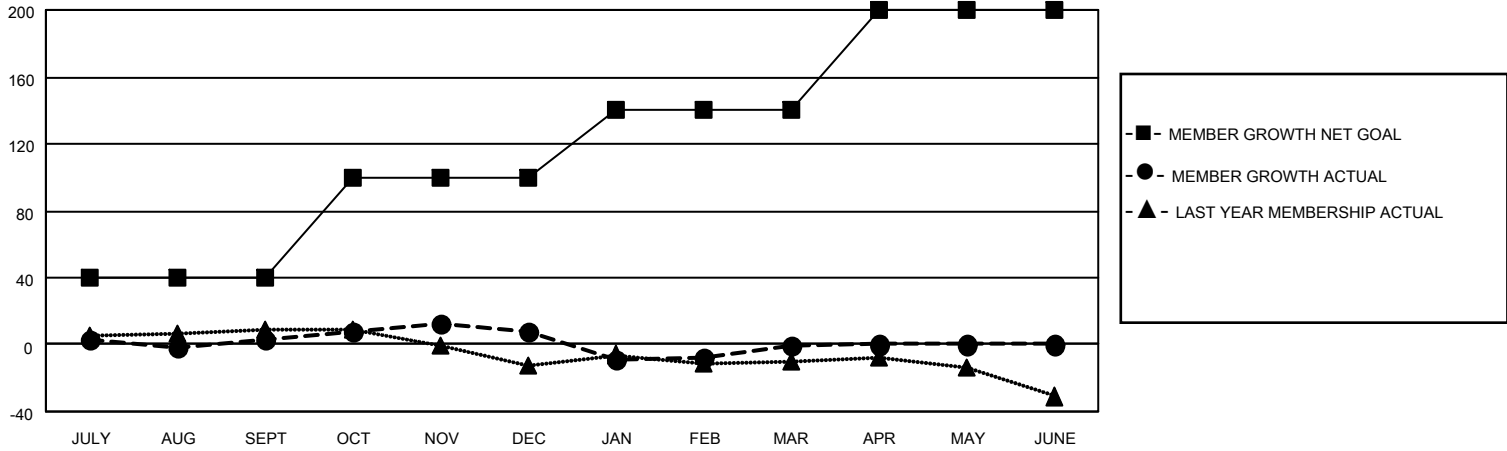
Clubs			
RESULTS FOR 2022-2023			
QUARTER	NEW CLUB GOAL	NEW CLUBS	DROPPED CLUBS
JULY/AUG/SEPT	0	0	0
OCT/NOV/DEC	0	0	0
JAN/FEB/MAR	0	0	0
APR/MAY/JUNE	0	0	0

Members			
RESULTS FOR 2022-2023			
QUARTER	MEMBER GROWTH NET GOAL	MEMBER GROWTH ACTUAL	DROPPED MEMBERS ACTUAL (including transfers)
JULY/AUG/SEPT	40	48	39
OCT/NOV/DEC	60	36	28
JAN/FEB/MAR	40	26	31
APR/MAY/JUNE	60	0	0

**GOALS AND ACTUAL NEW CLUBS CUMULATIVE**



**GOALS AND ACTUAL MEMBERS CUMULATIVE**



**DROPPED CLUBS: 0**

**39 CLUBS OF 64 ADDED 1 OR MORE NEW MEMBERS**

**GENDER DISTRIBUTION**

MALE	754 (63.63%)
FEMALE	430 (36.29%)
NON BINARY	0 (0.00%)
PREFER NOT TO ANSWER	1 (0.08%)

**DROPPED MEMBERS**

[CLICK HERE FOR CUMULATIVE MEMBERSHIP DATA](#)

DECEASED	16
CLUB CANCELLED	0
OTHER	82
<b>TOTAL</b>	<b>98</b>

TOTAL FAMILY UNIT MEMBERS 130

FAMILY MEMBERS PAYING HALF DUES 67